

Using the FT-817 on FT8

This worked for me

N5PGH

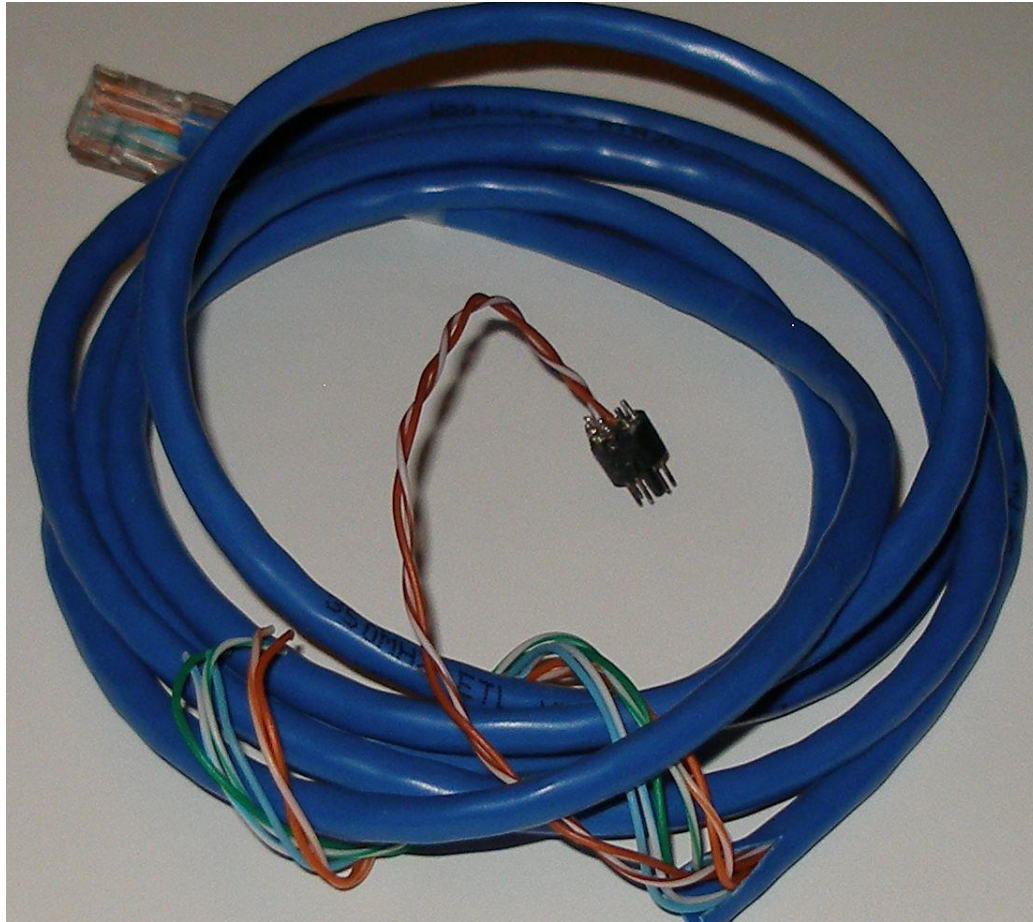
# Equipment

- Dell I-5 w/9 pin RS232 serial port
- Windows 7 OS
- Fox Delta SC1 Sound Card Interface
- FT-817D
- Yaesu CAT cable CT-62 This is a serial (RS232) to “ACC” cable

# Equipment

- Misc passive cables: 3 stereo audio
- Special cable for SC1. RJ45 pins 7&8 to “data” pins 3&4. I had to make this one to keep it “amateur”. The plug is from a ps2 mouse or keyboard.

# Special interface cable



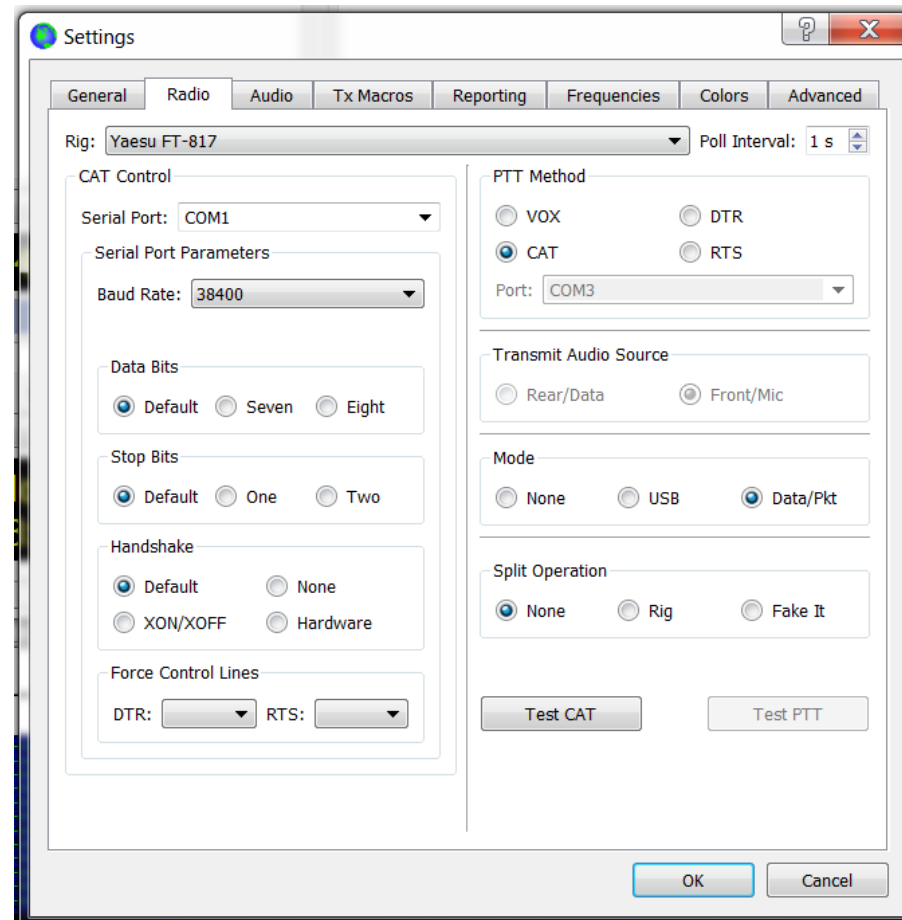
# Radio setup

- .Chk/Set CAT RATE (14) 38400
- .Chk/Set DIG-MODE (26) user-u
- .Remove mic
- .Switch SP/PH to PH(one)
- .Power off while setting up FT8

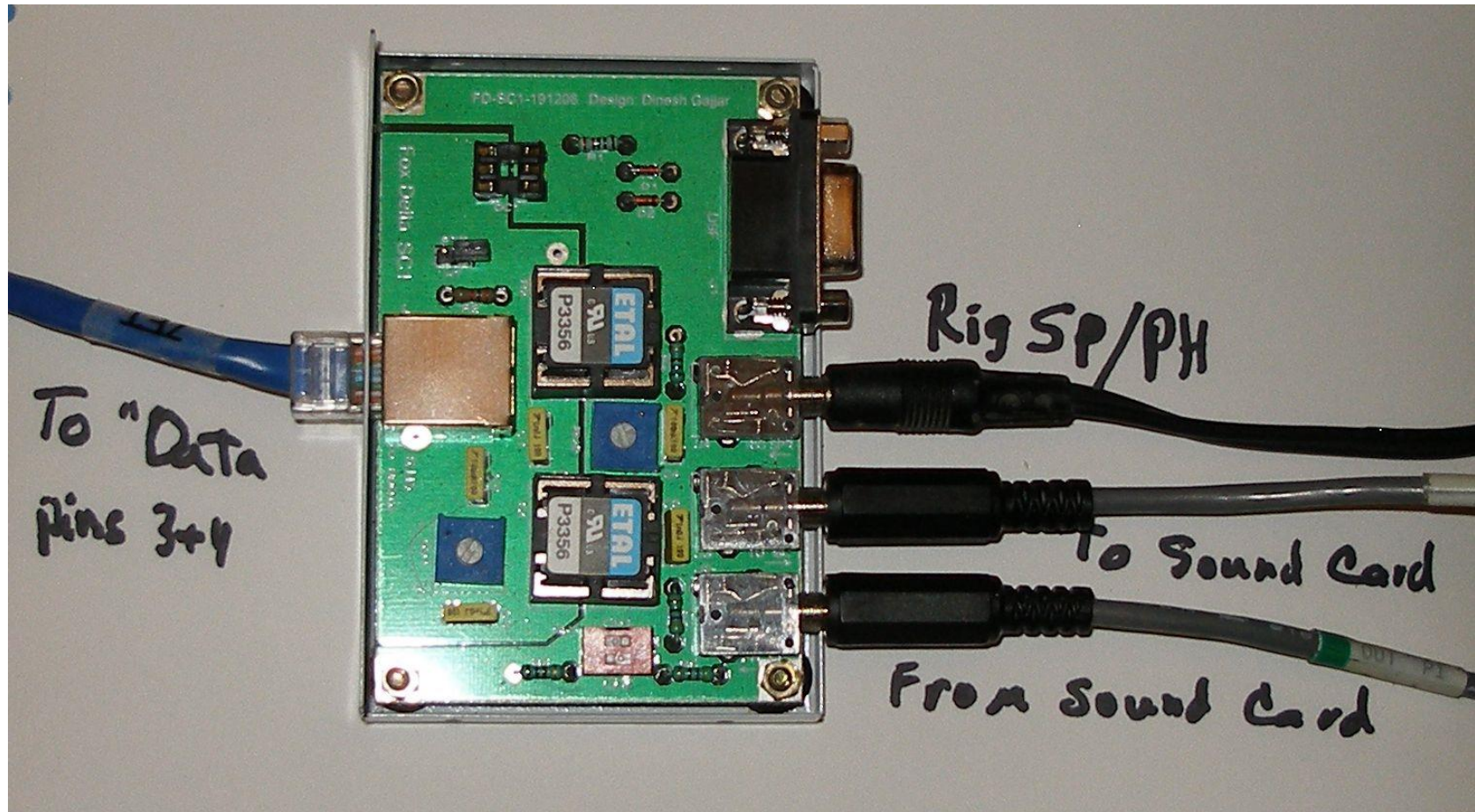
# Setup FT8

- Set up FT8 per the instructions and as well as a time sync software.
- I use a GPS puck with nmeatime2
- Exit FT8 before plugging in cables

# FT8 FT817D settings



# Interface





# Hookup procedure

- .With power off and FT8 not running:
- .Set PC audio in and out levels to 50%
- .Connect all cables per interface instructions. I used the PC mic and spkr connectors in the rear of the computer.
- .Connect dummy load to radio with a power meter inline

# Hookup procedure

- .Start FT8
- .Power up FT817D
- .Put FT8 in transmit mode (Tune) and adjust audio level to radio using mini vr to keep power out below compression point
- .Connect antenna and adjust audio level to pc using both radio volume control and mini vr in interface to show about 35 db on FT8 level meter

# Normal operation

- .The order of starting FT8 and power to the radio is not important.
- .The mic is not plugged in while running FT8
- .If you have any operational questions, come to the meeting and ask

# Notes

- .Once you set the speaker output level on the pc (50 %), leave it alone. If you change it, the radio power will also change accordingly.
- .On my Dell, plugging an audio cable into the front connector kills the audio to the rear
- .Support for Win 7 ends Jan, 2020. If you continue to use it, and disconnect the pc from the internet, you will need a non-internet based time sync solution.

# Notes

.I use a GPS puck with nmea2.

.The GPS puck I have is a Pharos GPS-360 which was used with Microsoft Streets

•<http://visualgps.net/index.html#nmea2-content>

.Learn more about time sync here:

•<https://www.lammertbies.nl/comm/info/GPS-time.html>